

# LINKED UP

MISSISSIPPI

**RESOURCE**

**GUIDE**

**What to Expect  
When Seeking  
Healthcare  
After High School**

# TABLE OF CONTENTS

This LinkedUp Referral Guide helps students in Mississippi identify healthcare options, including insurance and payment options, as they transition from high school and utilize adult healthcare systems.

Medicaid Family Planning Waiver.....	3
Information on LinkedUp.....	4
How to Use this Referral Guide.....	4
Healthcare Options at and Near Mississippi Four-Year Colleges and Universities.....	6
• Alcorn State University.....	6
• Belhaven University.....	6
• Delta State University.....	6
• Jackson State University.....	6
• Millsaps College.....	8
• Mississippi College.....	8
• Mississippi State University.....	8
• Mississippi University for Women.....	8
• Mississippi Valley State University.....	10
• Rust College.....	10
• Tougaloo College.....	10
• University of Mississippi.....	12
• University of Southern Mississippi.....	12
• William Carey University.....	12
Healthcare Options at and Near Mississippi 2-Year Colleges and Universities.....	14
• Coahoma Community College.....	14
• Copiah-Lincoln Community College.....	14
• East Central Community College.....	14
• East Mississippi Community College.....	14
• Hinds Community College.....	16
• Holmes Community College.....	16
• Itawamba Community College.....	16
• Jones County Junior College.....	16
• Meridian Community College.....	18
• Mississippi Delta Community College.....	18
• Mississippi Gulf Coast Community College.....	18
• Northwest Mississippi Community College.....	20
• Pearl River Community College.....	20
• Southwest Mississippi Community College.....	20
Healthcare Options in the Military.....	22
Job Centers.....	22
About Teen Health Mississippi.....	23

# MEDICAID FAMILY PLANNING WAIVER

If you have no other health insurance that provides basic sexual health services, you may qualify to receive free health care through the Medicaid Family Planning Waiver program.

## Who Is Eligible

### You are eligible for these services if:

- You are between the ages of 13 and 44
- You are currently not pregnant
- You do not have Medicare, Children's Health Insurance Program (CHIP), or any other health insurance or third party medical coverage
- Your family income is at or below 194% of the Federal Poverty Level

## Services You Can Receive

### Health Services

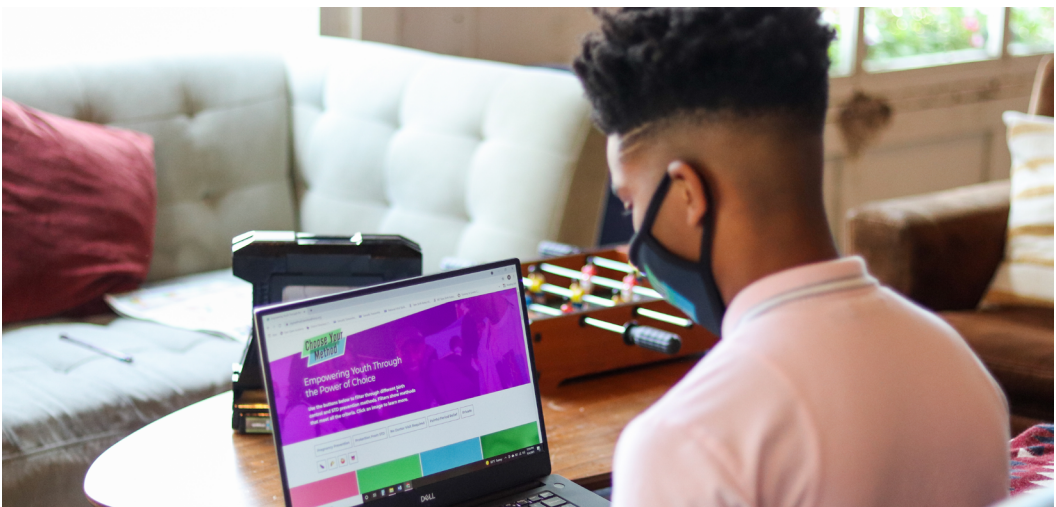
- An annual medical exam by a physician. This may include a medical history, height, weight and blood pressure checks, and for women, a Pap smear and clinical breast exam
- Testing for pregnancy, HIV, and sexually-transmitted infections (STIs)
- Free prescription for medications to treat an STI

### Birth Control and Family Planning

- Visits to a nurse or doctor related to birth control methods and family planning services
- Free prescriptions for birth control supplies and contraceptives
- Family planning counseling and education on all birth control methods
- Pre-conception counseling to help plan your next pregnancy

## How to Apply

- To apply to enroll in the Medicaid Family Planning Waiver program, you must complete the application form at [medicaid.ms.gov](https://medicaid.ms.gov) and return the completed form to the Mississippi Division of Medicaid. Once approved, you will receive a yellow Medicaid card in the mail from the Mississippi Division of Medicaid.



## What is LinkedUp?

LinkedUp is a program from Teen Health Mississippi that helps link students transitioning from high school to healthcare services as they go to college or whatever their plans are after high school. The goal of the LinkedUp program is to ensure all students know their healthcare and payment options so that they may have uninterrupted access to the health services they may need as they transition from high school.

## How to Use This Referral Guide

This guide is written to help high school students in Mississippi know what to expect when it comes to accessing healthcare when they transition into the adult healthcare system. This guide contains information on the healthcare and payment options on each college and university campus in Mississippi and in cities across the state. This is a starting point to help students consider healthcare before they leave high school.

LIN

### WHO IS IT FOR?

High school students ages  
17-21 years old

### WHAT DOES IT DO?

18- to 19-year-old  
health outcomes  
to other young people





## WIKEDUP

### PROBLEM T SOLVE?

ds have poorer  
when compared  
people.

### WHAT IS THE BIG IDEA?



Create a linkage connecting graduating  
high school students to youth-friendly  
healthcare services after high school.

do I go to  
healthcare?

health centers?

Now  
what?

or

or



Community  
College



Work



University



4-Year Institution	City	On Campus Clinic?	Name of On-Campus Health Center	Location of On-Campus Health Center
Alcorn State University	Lorman	Yes	ASU Rowan Hall Health Services Center	Rowan Hall next to the E.E. Simmons Gymnasium
Belhaven University	Jackson	No	No on-campus clinic. See "Full-Service Community Health Centers Located Near Campus" column for information on nearby clinics.	No on-campus clinic. See "Full-Service Community Health Centers Located Near Campus" column for information on nearby clinics.
Delta State University	Cleveland	Yes	O.W. Reilly Student Health Center	Across from Brumby-Castle Residence Hall, near the cafeteria, behind the Student Union
Jackson State University	Jackson	Yes	JSU Health Center	On Prentiss St. across from the Lee E. Williams Athletics and Assembly Center

Services Offered at On-Campus Health Center	Insurance and Payment Options at On-Campus Health Center	Days and Hours On-Campus Health Center Open	Full-Service Community Health Centers Located Near Campus
Pregnancy Testing; STI/HIV Testing; STI/HIV Treatment; Contraceptive Services; Health Screenings and Education; Referrals to Outside Services; Mental Health Care/Counseling; General First Aid; Immunizations and Vaccinations; Treatment of Acute Injuries and Illnesses; Treatment and Management for Asthma and Allergies; Screenings and Treatment for Diabetes; Laboratory Located On Campus	Health care services are provided free of cost. When necessary, referrals are made to local health centers. Expenses incurred for services rendered at an off-campus health center are the responsibility of the student.	Monday to Thursday 8 a.m. to 5 p.m.; Friday 8 a.m. to 4 p.m.	Jefferson Comprehensive Health Center (405 Main St., Fayette, MS, located 14 miles from campus); Private insurance, Medicaid and Medicare, and self-pay (sliding fee scale) are accepted for all services.
No on-campus clinic. See "Full-Service Community Health Centers Located Near Campus" column for information on nearby clinics.	No on-campus clinic. See "Full-Service Community Health Centers Located Near Campus" column for information on nearby clinics.	No on-campus clinic. See "Full-Service Community Health Centers Located Near Campus" column for information on nearby clinics.	Jackson-Hinds Comprehensive Health Center -Bennie G. Thompson Center (514 E. Woodrow Wilson Dr., Jackson, MS 39216, located less than 1 mile from campus); Private insurance, Medicaid and Medicare, and self-pay (sliding fee scale) are accepted for all services.
Health Screenings and Education; Referrals to Outside Services; Mental Health Care/Counseling; General First Aid; Immunizations and Vaccinations; Treatment of Acute Injuries and Illnesses	Health care services are provided free of cost. However, a fee is charged for certain labs, supplies, and prescription medications that may be provided on site. Private insurance is accepted for these services. When necessary, referrals are made to local health centers. Expenses incurred for services rendered at an off-campus health center are the responsibility of the student.	Monday to Thursday 8 a.m. to 5 p.m., Friday 1 p.m. to 5 p.m.	Delta Health Center - Searcy Medical Center (548 Rosemary Road, Cleveland, MS, located 2 miles from campus); Private insurance, Medicaid and Medicare, and self-pay (sliding fee scale) are accepted for all services.
Pregnancy Testing; STI/HIV Testing; STI/HIV Treatment; Contraceptive Services; Health Screenings and Education; Referrals to Outside Services; Mental Health Care/Counseling; General First Aid; Immunizations and Vaccinations; Treatment of Acute Injuries and Illnesses; Treatment and Management for Asthma and Allergies; Screenings and Treatment for Diabetes; Pharmacy Located On Campus	Health care services are provided free of cost. However, a fee is charged for certain labs, supplies, and prescription medications that may be provided on site. When necessary, referrals are made to local health centers. Expenses incurred for services rendered at an off-campus health center are the responsibility of the student.	Monday to Friday 8 a.m. to 5 p.m.	Jackson-Hinds Comprehensive Health Center -Bennie G. Thompson Center (514 E. Woodrow Wilson Dr., Jackson, MS 39216, located 1 mile from campus); Private insurance, Medicaid and Medicare, and self-pay (sliding fee scale) are accepted for all services.

4-Year Institution	City	On Campus Clinic?	Name of On-Campus Health Center	Location of On-Campus Health Center
Millsaps College	Jackson	Yes	Wesson Health Center	On the first floor of the Campbell College Center, just inside the College Center's south entrance
Mississippi College	Clinton	Yes	Baptist Medical Clinic	On the corner of Clinton Parkway and E. College St. across the parking lot from the Hitt-McCullough Hall men's dorm
Mississippi State University	Starkville	Yes	John C. Longest Student Health Center	On the corner of Hardy and Morrill Road, directly across from the Hand Lab
Mississippi University for Women	Columbus	Yes	Campus Health Center	Eckford Hall



Services Offered at On-Campus Health Center	Insurance and Payment Options at On-Campus Health Center	Days and Hours On-Campus Health Center Open	Full-Service Community Health Centers Located Near Campus
---	--	---	---

Health Screenings and Education; Referrals to Outside Services; Mental Health Care/ Counseling; General First Aid; Immunizations and Vaccinations; Treatment of Acute Injuries and Illnesses; Treatment and Management for Asthma and Allergies; Laboratory Located On Campus	Regular office visits are free of cost. However, costs are applied to the few basic lab tests and immunizations performed in the center. When necessary, referrals are made to local health centers. Expenses incurred for services rendered at an off-campus health center are the responsibility of the student.	Monday 8:30 a.m. to 1:30 p.m.; Tuesday 8:30 a.m. to 2 p.m.; Wednesday 10:30 a.m. to 3:30 p.m.; Thursday 8:30 a.m. to 2 p.m.; Friday 8 a.m. to 1 p.m.	Jackson-Hinds Comprehensive Health Center -Bennie G. Thompson Center (514 E. Woodrow Wilson Dr., Jackson, MS 39216, located less than 1 mile from campus); Private insurance, Medicaid and Medicare, and self-pay (sliding fee scale) are accepted for all services.
---	--	--	--

Health Screenings and Education; Referrals to Outside Services; Mental Health Care/ Counseling; General First Aid; Immunizations and Vaccinations; Treatment of Acute Injuries and Illnesses; Treatment and Management for Asthma and Allergies; Screenings and Treatment for Diabetes; Laboratory Located On Campus	Routine health care services are provided free of cost to students who have paid the fixed fee. However, there are charges for lab work, x-rays, injections, and other additional services and supplies that will be the responsibility of the student to cover. Private insurance is accepted for these services. When necessary, referrals are made to local health centers. Expenses incurred for services rendered at an off-campus health center are the responsibility of the student.	Monday to Friday 8 a.m. to 12 p.m. and 1 p.m. to 4:30 p.m.	Jackson-Hinds Comprehensive Health Center (3502 West Northside Dr., Jackson, MS 39213, located 6 miles from campus); Private insurance, Medicaid and Medicare, and self-pay (sliding fee scale) are accepted for all services.
--	--	--	--

Pregnancy Testing; STI/ HIV Testing; Contraceptive Services; Health Screenings and Education; Referrals to Outside Services; Mental Health Care/ Counseling; General First Aid; Immunizations and Vaccinations; Treatment of Acute Injuries and Illnesses; Treatment and Management for Asthma and Allergies; Pharmacy Located On Campus; Laboratory Located On Campus	Regular office visits are free of cost. However, other services, including x-rays, labs, physical therapy, and medications, are charged at student discounted rates that will be the responsibility of the student to cover. Private insurance is accepted for these services. Students may choose to transfer their charges to their student account. When necessary, referrals are made to local health centers. Expenses incurred for services rendered at an off-campus health center are the responsibility of the student.	Monday, Tuesday, Wednesday, and Friday 8 a.m. to 5 p.m.; Thursday 9 a.m. to 5 p.m.	Oktebehha Family Medical Center (105 Felix Long Drive, Starkville, MS 39759, located 2 miles from campus); Private insurance, Medicaid and Medicare, and self-pay (sliding fee scale) are accepted for all services.
--	--	--	--

Health Screenings and Education; Referrals to Outside Services; Mental Health Care/ Counseling; General First Aid; Immunizations and Vaccinations; Treatment of Acute Injuries and Illnesses; Treatment and Management for Asthma and Allergies; Laboratory Located On Campus	Regular office visits are free of cost. However, other services, including medications, supplies, and complete physical exams, are charged at student discounted rates that will be the responsibility of the student to cover. When necessary, referrals are made to local health centers. Expenses incurred for services rendered at an off-campus health center are the responsibility of the student.	Monday to Friday 8 a.m. to 5 p.m.	Oktebehha Family Medical Center (105 Felix Long Drive, Starkville, MS 39759, located 25 miles from campus); Private insurance, Medicaid and Medicare, and self-pay (sliding fee scale) are accepted for all services.
---	---	-----------------------------------	---

4-Year Institution	City	On Campus Clinic?	Name of On-Campus Health Center	Location of On-Campus Health Center
--------------------	------	-------------------	---------------------------------	-------------------------------------

Mississippi Valley State University	Itta Bena	Yes	Student Health Center	On Rosa Parks St. across from faculty and staff housing
-------------------------------------	-----------	-----	-----------------------	---

Rust College	Holly Springs	Yes	Student Health Center	In Shaw Hall
--------------	---------------	-----	-----------------------	--------------

Tougaloo College	Tougaloo	Yes	Campus Medical Clinic	In the Owens Health and Wellness Center
------------------	----------	-----	-----------------------	---

Services Offered at On-Campus Health Center	Insurance and Payment Options at On-Campus Health Center	Days and Hours On-Campus Health Center Open	Full-Service Community Health Centers Located Near Campus
---	--	---	---

Health Screenings and Education; Referrals to Outside Services; Mental Health Care/ Counseling; General First Aid; Treatment of Acute Injuries and Illnesses

Health care services are provided free of cost. When necessary, referrals are made to local health centers. Expenses incurred for services rendered at an off-campus health center are the responsibility of the student.

Monday to Friday  
8 a.m. to 5 p.m.;  
Physician Office  
Hours: Tuesday  
1 p.m. to 4 p.m.;  
Thursday: 9 a.m.  
to 12 p.m.

Mallory Community Health Center - Greenwood Location (201 E. Washington St., Greenwood, MS, located 10 miles from campus); Private insurance, Medicaid and Medicare, and self-pay (sliding fee scale) are accepted for all services.

Health Screenings and Education; Referrals to Outside Services; Mental Health Care/ Counseling; General First Aid; Treatment of Acute Injuries and Illnesses

Health care services are provided free of cost. When necessary, referrals are made to local health centers. Expenses incurred for services rendered at an off-campus health center are the responsibility of the student.

Monday to Friday  
8 a.m. to 5 p.m.

Mt. Pleasant Family Health Clinic (154 Mt. Pleasant Road, Mt. Pleasant, MS 38649, located 13 miles from campus); Private insurance, Medicaid and Medicare, and self-pay (sliding fee scale) are accepted for all services.

Pregnancy Testing; STI/HIV Testing; STI/HIV Treatment; Contraceptive Services; Health Screenings and Education; Referrals to Outside Services; Dental Care; Mental Health Care/Counseling; General First Aid; Immunizations and Vaccinations; Treatment of Acute Injuries and Illnesses; Treatment and Management for Asthma and Allergies; Screenings and Treatment for Diabetes; Laboratory Located On Campus

Medicaid, Medicare, and private insurance is accepted. For uninsured and underinsured students, a sliding fee discount program is offered, where students pay a fee based off of their income.

Monday to Friday  
8 a.m. to 5 p.m.

Jackson-Hinds Comprehensive Health Center (3502 West Northside Dr., Jackson, MS 39213, located 6 miles from campus); Private insurance, Medicaid and Medicare, and self-pay (sliding fee scale) are accepted for all services.

4-Year Institution	City	On Campus Clinic?	Name of On-Campus Health Center	Location of On-Campus Health Center
University of Mississippi	Oxford	Yes	Student Health Center	On the first floor of the V.B. Harrison Building
University of Southern Mississippi	Hattiesburg	Yes	Moffitt Health Center	In Scott Hall on West 4th St. next to the football practice fields
William Carey University	Hattiesburg	No	No on-campus clinic. See "Full-Service Community Health Centers Located Near Campus" column for information on nearby clinics.	No on-campus clinic. See "Full-Service Community Health Centers Located Near Campus" column for information on nearby clinics.

Services Offered at On-Campus Health Center	Insurance and Payment Options at On-Campus Health Center	Days and Hours On-Campus Health Center Open	Full-Service Community Health Centers Located Near Campus
---	--	---	---

<p>Pregnancy Testing; STI/HIV Testing; STI/HIV Treatment; Contraceptive Services; Health Screenings and Education; Referrals to Outside Services; Mental Health Care/Counseling; General First Aid; Immunizations and Vaccinations; Treatment of Acute Injuries and Illnesses; Treatment and Management for Asthma and Allergies; Screenings and Treatment for Diabetes; Pharmacy Located On Campus; Laboratory Located On Campus</p>	<p>Regular office visits for an acute illness or injury are free of cost. However, other services including x-rays, labs, supplies, suturing lacerations, injections, immunizations, and other surgical procedures are charged a fee that will be the responsibility of the student to cover. Private insurance is accepted for these services. Students may choose to transfer their charges to their student account. Private insurance is accepted: Blue Cross/Blue Shield and the state employees insurance plans. When necessary, referrals are made to local health centers. Expenses incurred for services rendered at an off-campus health center are the responsibility of the student.</p>	<p>Monday to Thursday: 8 a.m. to 5 p.m.; Friday: 9 a.m. to 5 p.m.</p>	<p>Family Health Care Clinic (102 Blackmur Dr., Water Valley, MS 38965, located 19 miles from campus); Private insurance, Medicaid and Medicare, and self-pay (sliding fee scale) are accepted for all services.</p>
<p>Pregnancy Testing; STI/HIV Testing; Contraceptive Services; Health Screenings and Education; Referrals to Outside Services; Mental Health Care/Counseling; General First Aid; Immunizations and Vaccinations; Treatment of Acute Injuries and Illnesses; Treatment and Management for Asthma and Allergies; Screenings and Treatment for Diabetes; Pharmacy Located On Campus; Laboratory Located On Campus</p>	<p>A \$20 fee is charged for each office visit. Other services including lab, x-ray, and pharmacy are charged an additional fee. All fees will be the responsible of the student. Students may choose to transfer their charges to their student account. Private insurance is accepted: Blue Cross/Blue Shield and Mississippi United Health Care plans. When necessary, referrals are made to local health centers. Expenses incurred for services rendered at an off-campus health center are the responsibility of the student.</p>	<p>Monday to Wednesday 8 a.m. to 5 p.m.; Thursday 9 a.m. to 5 p.m.; Friday 8 a.m. to 4:30 p.m.</p>	<p>Hattiesburg Family Health Center (66 Old Airport Road, Hattiesburg, MS 39401, located 5 miles from campus); Private insurance, Medicaid and Medicare, and self-pay (sliding fee scale) are accepted for all services.</p>
<p>No on-campus clinic. See "Full-Service Community Health Centers Located Near Campus" column for information on nearby clinics.</p>	<p>No on-campus clinic. See "Full-Service Community Health Centers Located Near Campus" column for information on nearby clinics.</p>	<p>No on-campus clinic. See "Full-Service Community Health Centers Located Near Campus" column for information on nearby clinics.</p>	<p>Hattiesburg Family Health Center (66 Old Airport Road, Hattiesburg, MS 39401, located 2 miles from campus); Private insurance, Medicaid and Medicare, and self-pay (sliding fee scale) are accepted for all services.</p>

2-Year Institution	City	On Campus Clinic?	Name of On-Campus Health Center	Location of On-Campus Health Center
Coahoma Community College	Clarksdale	Yes	CCC Health Center	In the CCC Student Affairs Multi-Complex Center
Copiah-Lincoln Community College	Wesson	No	No on-campus clinic. See "Full-Service Community Health Centers Located Near Campus" column for information on nearby clinics.	No on-campus clinic. See "Full-Service Community Health Centers Located Near Campus" column for information on nearby clinics.
East Central Community College	Decatur	No	No on-campus clinic. See "Full-Service Community Health Centers Located Near Campus" column for information on nearby clinics.	No on-campus clinic. See "Full-Service Community Health Centers Located Near Campus" column for information on nearby clinics.
East Mississippi Community College	Scooba	No	No on-campus clinic. See "Full-Service Community Health Centers Located Near Campus" column for information on nearby clinics.	No on-campus clinic. See "Full-Service Community Health Centers Located Near Campus" column for information on nearby clinics.

Services Offered at On-Campus Health Center	Insurance and Payment Options at On-Campus Health Center	Days and Hours On-Campus Health Center Open	Full-Service Community Health Centers Located Near Campus
Pregnancy Testing; Health Screenings and Education; Referrals to Outside Services; Mental Health Care/Counseling; General First Aid; Treatment of Acute Injuries and Illnesses; Treatment and Management for Asthma and Allergies; Screenings and Treatment for Diabetes	Regular office visits are free of cost. When necessary, referrals are made to local health centers. Expenses incurred for services rendered at an off-campus health center are the responsibility of the student.	Monday to Thursday 8 a.m. to 4:30 p.m.; Friday: 8 a.m. to 4 p.m.	Aaron E. Henry Community Health Services Center (800 Ohio Ave., Clarksdale, MS 38614, located 5 miles from campus); Private insurance, Medicaid and Medicare, and self-pay (sliding fee scale) are accepted for all services.
No on-campus clinic. See "Full-Service Community Health Centers Located Near Campus" column for information on nearby clinics.	No on-campus clinic. See "Full-Service Community Health Centers Located Near Campus" column for information on nearby clinics.	No on-campus clinic. See "Full-Service Community Health Centers Located Near Campus" column for information on nearby clinics.	Copiah Comprehensive Health (550 N. Caldwell Dr., Hazlehurst, MS 39083, located 13 miles from campus); Private insurance, Medicaid and Medicare, and self-pay (sliding fee scale) are accepted for all services.
No on-campus clinic. See "Full-Service Community Health Centers Located Near Campus" column for information on nearby clinics.	No on-campus clinic. See "Full-Service Community Health Centers Located Near Campus" column for information on nearby clinics.	No on-campus clinic. See "Full-Service Community Health Centers Located Near Campus" column for information on nearby clinics.	Newton Health Care (9431 Eastside Dr., Suite E, Newton, MS 39345, located 10 miles from campus); Private insurance, Medicaid and Medicare, and self-pay (sliding fee scale) are accepted for all services.
No on-campus clinic. See "Full-Service Community Health Centers Located Near Campus" column for information on nearby clinics.	No on-campus clinic. See "Full-Service Community Health Centers Located Near Campus" column for information on nearby clinics.	No on-campus clinic. See "Full-Service Community Health Centers Located Near Campus" column for information on nearby clinics.	Scooba Family Medical Clinic (927 Kemper St., Scooba, MS 39358, located 1 mile from campus); Private insurance, Medicaid and Medicare, and self-pay (sliding fee scale) are accepted for all services.

2-Year Institution	City	On Campus Clinic?	Name of On-Campus Health Center	Location of On-Campus Health Center
Hinds Community College	Raymond and Utica	No, but provides services to support students in accessing local healthcare services.	Single Stop	Contact Anita Bell-Muhammad (Single Stop Coordinator) at anita.bell2@hindscc.edu or 601-857-3247.
Holmes Community College	Goodman	No	No on-campus clinic. See "Full-Service Community Health Centers Located Near Campus" column for information on nearby clinics.	No on-campus clinic. See "Full-Service Community Health Centers Located Near Campus" column for information on nearby clinics.
Itawamba Community College	Fulton	No	No on-campus clinic. See "Full-Service Community Health Centers Located Near Campus" column for information on nearby clinics.	No on-campus clinic. See "Full-Service Community Health Centers Located Near Campus" column for information on nearby clinics.
Jones County Junior College	Ellisville	Yes	Jones Campus Clinic	In the Home and Health Building in room 103



Services Offered at On-Campus Health Center	Insurance and Payment Options at On-Campus Health Center	Days and Hours On-Campus Health Center Open	Full-Service Community Health Centers Located Near Campus
Health Screenings and Education; Referrals to Outside Services; Mental Health Care/Counseling	Regular office visits are free of cost. When necessary, referrals are made to local health centers. Expenses incurred for services rendered at an off-campus health center are the responsibility of the student.	Monday to Friday 8 a.m. to 4:30 p.m.	Jackson-Hinds Comprehensive Health Center (various locations in and around Jackson); Private insurance, Medicaid and Medicare, and self-pay (sliding fee scale) are accepted for all services.
No on-campus clinic. See "Full-Service Community Health Centers Located Near Campus" column for information on nearby clinics.	No on-campus clinic. See "Full-Service Community Health Centers Located Near Campus" column for information on nearby clinics.	No on-campus clinic. See "Full-Service Community Health Centers Located Near Campus" column for information on nearby clinics.	Mallory Community Health Center - Durant (33795 MS-12, Durant, MS 39063, located 8 miles from campus); Private insurance, Medicaid and Medicare, and self-pay (sliding fee scale) are accepted for all services.
No on-campus clinic. See "Full-Service Community Health Centers Located Near Campus" column for information on nearby clinics.	No on-campus clinic. See "Full-Service Community Health Centers Located Near Campus" column for information on nearby clinics.	No on-campus clinic. See "Full-Service Community Health Centers Located Near Campus" column for information on nearby clinics.	Access Family Health Services - Tremont (12725 Hwy 23 North, Tremont, MS 38876, located 9 miles from campus); Private insurance, Medicaid and Medicare, and self-pay (sliding fee scale) are accepted for all services.
Health Screenings and Education; Referrals to Outside Services; Mental Health Care/Counseling; General First Aid; Treatment of Acute Injuries and Illnesses	Regular office visits are free of cost. When necessary, referrals are made to local health centers. Expenses incurred for services rendered at an off-campus health center are the responsibility of the student.	Monday to Friday 8 a.m. to 4 p.m.	Family Health Center - Laurel (103 South 12th Ave., Laurel, MS 39440, located 8 miles from campus); Private insurance, Medicaid and Medicare, and self-pay (sliding fee scale) are accepted for all services.

2-Year Institution	City	On Campus Clinic?	Name of On-Campus Health Center	Location of On-Campus Health Center
Meridian Community College	Meridian	No	No on-campus clinic. See "Full-Service Community Health Centers Located Near Campus" column for information on nearby clinics.	No on-campus clinic. See "Full-Service Community Health Centers Located Near Campus" column for information on nearby clinics.
Mississippi Delta Community College	Moorhead	No	No on-campus clinic. See "Full-Service Community Health Centers Located Near Campus" column for information on nearby clinics.	No on-campus clinic. See "Full-Service Community Health Centers Located Near Campus" column for information on nearby clinics.
Mississippi Gulf Coast Community College	Perkinston	Yes	Medical Analysis MGCCC Perkinston Campus	In the Barry L. Mellinger Student Center next to the MGCCC College Bookstore

Services Offered at On-Campus Health Center	Insurance and Payment Options at On-Campus Health Center	Days and Hours On-Campus Health Center Open	Full-Service Community Health Centers Located Near Campus
No on-campus clinic. See “Full-Service Community Health Centers Located Near Campus” column for information on nearby clinics.	No on-campus clinic. See “Full-Service Community Health Centers Located Near Campus” column for information on nearby clinics.	No on-campus clinic. See “Full-Service Community Health Centers Located Near Campus” column for information on nearby clinics.	Greater Meridian Health Clinic (2701 Davis St., Meridian, MS 39301, located 2 miles from campus); Private insurance, Medicaid and Medicare, and self-pay (sliding fee scale) are accepted for all services.
No on-campus clinic. See “Full-Service Community Health Centers Located Near Campus” column for information on nearby clinics.	No on-campus clinic. See “Full-Service Community Health Centers Located Near Campus” column for information on nearby clinics.	No on-campus clinic. See “Full-Service Community Health Centers Located Near Campus” column for information on nearby clinics.	Delta Health Center - Moorhead (110 West Washington St., Moorhead, MS 38761, located 1 mile from campus); Private insurance, Medicaid and Medicare, and self-pay (sliding fee scale) are accepted for all services.
Pregnancy Testing; STI/HIV Testing; STI/HIV Treatment; Health Screenings and Education; Referrals to Outside Services; Mental Health Care/ Counseling; General First Aid; Immunizations and Vaccinations; Treatment of Acute Injuries and Illnesses; Treatment and Management for Asthma and Allergies; Screenings and Treatment for Diabetes; Laboratory located on campus	A \$10 fee is charged for all office visits. However, other services including medications, labs, and complete physical exams are charged at student discounted rates that will be the responsibility of the student to cover. When necessary, referrals are made to local health centers. Expenses incurred for services rendered at an off-campus health center are the responsibility of the student.	Monday and Thursday 8 a.m. to 5 p.m.	Coastal Family Health Center - Saucier (23453 Central Dr., Saucier, MS 39574, located 10 miles from campus); Private insurance, Medicaid and Medicare, and self-pay (sliding fee scale) are accepted for all services.

2-Year Institution	City	On Campus Clinic?	Name of On-Campus Health Center	Location of On-Campus Health Center
Northwest Mississippi Community College	Senatobia	No	No on-campus clinic. See "Full-Service Community Health Centers Located Near Campus" column for information on nearby clinics.	No on-campus clinic. See "Full-Service Community Health Centers Located Near Campus" column for information on nearby clinics.
Pearl River Community College	Poplarville	Yes	Health Services	In Crosby Hall on the Poplarville Campus
Southwest Mississippi Community College	Summit	No	No on-campus clinic. See "Full-Service Community Health Centers Located Near Campus" column for information on nearby clinics.	No on-campus clinic. See "Full-Service Community Health Centers Located Near Campus" column for information on nearby clinics.

Services Offered at On-Campus Health Center	Insurance and Payment Options at On-Campus Health Center	Days and Hours On-Campus Health Center Open	Full-Service Community Health Centers Located Near Campus
No on-campus clinic. See “Full-Service Community Health Centers Located Near Campus” column for information on nearby clinics.	No on-campus clinic. See “Full-Service Community Health Centers Located Near Campus” column for information on nearby clinics.	No on-campus clinic. See “Full-Service Community Health Centers Located Near Campus” column for information on nearby clinics.	Aaron E. Henry Community Health Services Center - M.J. Edwards Satellite Clinic (643 W. Service Dr., Coldwater, MS 38618, located 4 miles from campus); Private insurance, Medicaid and Medicare, and self-pay (sliding fee scale) are accepted for all services.
Health Screenings and Education; Referrals to Outside Services; Mental Health Care/ Counseling; General First Aid; Immunizations and Vaccinations; Treatment of Acute Injuries and Illnesses	Regular office visits are free of cost. When necessary, referrals are made to local health centers. Expenses incurred for services rendered at an off-campus health center are the responsibility of the student.	Monday to Friday 8 a.m. to 3 p.m.	Lumberton Family Health Center (598 W. 11th Ave., Lumberton, MS 39455, located 13 miles from campus); Private insurance, Medicaid and Medicare, and self-pay (sliding fee scale) are accepted for all services.
No on-campus clinic. See “Full-Service Community Health Centers Located Near Campus” column for information on nearby clinics.	No on-campus clinic. See “Full-Service Community Health Centers Located Near Campus” column for information on nearby clinics.	No on-campus clinic. See “Full-Service Community Health Centers Located Near Campus” column for information on nearby clinics.	Amite County Medical Services - PCMS Medical Clinic (300 Rawls Dr., Suite 1300, McComb, MS 39648, located 4 miles from campus); Private insurance, Medicaid and Medicare, and self-pay (sliding fee scale) are accepted for all services.

# JOB CENTERS

Name	City	On campus clinic?	Services offered	Health Center Location
Finch-Henry Job Corps Center	Batesville, MS	Yes	Wellness center provides basic medical, dental, optometry, and mental health services which are provided free to you	Building 1
Mississippi Job Corps Center	Crystal Springs, MS	Yes	Wellness center provides basic medical, dental, optometry, and mental health services which are provided free to you	Health and Wellness Center
Gulfport Job Corps Center	Gulfport, MS	Yes	Wellness center provides basic medical, dental, optometry, and mental health services which are provided free to you.	Information will be provided upon enrollment.

## HEALTHCARE OPTIONS IN THE MILITARY

TRICARE is the Department of Defense's healthcare program—or the military's equivalent of a medical insurance provider. All active duty service members, including those in basic training, are automatically enrolled in the TRICARE program called TRICARE Prime. Active services members enrolled in TRICARE Prime receive full medical benefits on the first day of active duty through a primary care provider at their local military facility.

National Guard/Reserve members will only be enrolled in the TRICARE Prime program when they are activated. Non-activated Guard/Reserve members will not be enrolled in the TRICARE Prime program and will need to find and enroll in their own health insurance plan when they are inactivated. Non-activated Guard/Reserve members have the option to enroll in a TRICARE program specifically for Guard/

Reserve members not on active duty, called TRICARE Reserve Select. In regards to sexual and reproductive health services provided to active-duty military service members on the TRICARE program, the Department of Defense provides no-cost contraception and reproductive health care services to all of its members, including at basic training. At basic training, recruits are provided education on all types of birth control and have access to contraception.

# WHAT IS TEEN HEALTH MISSISSIPPI?

We use a 360-degree approach to our work, which involves both teens and the communities in which they live. We understand that when young people have the resources they need, whole communities benefit.

An organization that works to ensure young people have access to high-quality sex education and youth-friendly healthcare services. We envision a Mississippi where teens have access to the essential knowledge, skills, resources, and support so they can grow into healthy adults and move the state forward.

## GUIDING PRINCIPLES

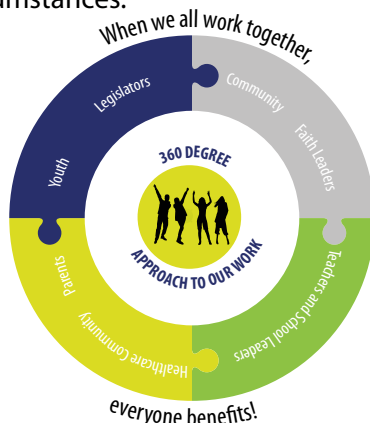
- We believe all teens in Mississippi deserve access to high-quality sex education and youth-friendly healthcare to attain their highest level of health.

We promote research-based best practices for teen health as guided by the scientific community.

- We support the sexual and reproductive health and rights of Mississippi teens, with a specific focus on developing quality relationships and open and honest dialogue between youth and supportive adults, while trusting that young people can make informed decisions about their health and lives.
- We work for, and in partnership with, young people across the state of Mississippi. We approach our work with enthusiasm and dedication.

We work to give youth a voice in matters that most affect them. As such, our trainings, advocacy, and programs are youth-informed and center on the experiences and needs of Mississippi teens.

- We affirm the universal principles of fairness, respect, and equity for all persons, regardless of race, ethnicity, religion, class, sexual orientation, ability, or gender identity.
- We are guided by the best interests of Mississippi teens and the communities in which they live. We act with this in mind at all times and in all circumstances.



For more information,  
visit [teenhealthms.org](https://teenhealthms.org).

@teenhealthms





<https://www.teenhealthms.org>

124 East Second St.  
Clarksdale, MS 38614

125 S. Congress St., Suite 1224  
Jackson, MS 39201

Teen Health Mississippi's mission is to ensure all Mississippi youth have access to high-quality sex education and youth-friendly healthcare services. Teen Health Mississippi envisions a healthier Mississippi where youth have access to essential knowledge, skills, resources, and support so they may grow into healthy adults and move Mississippi forward.